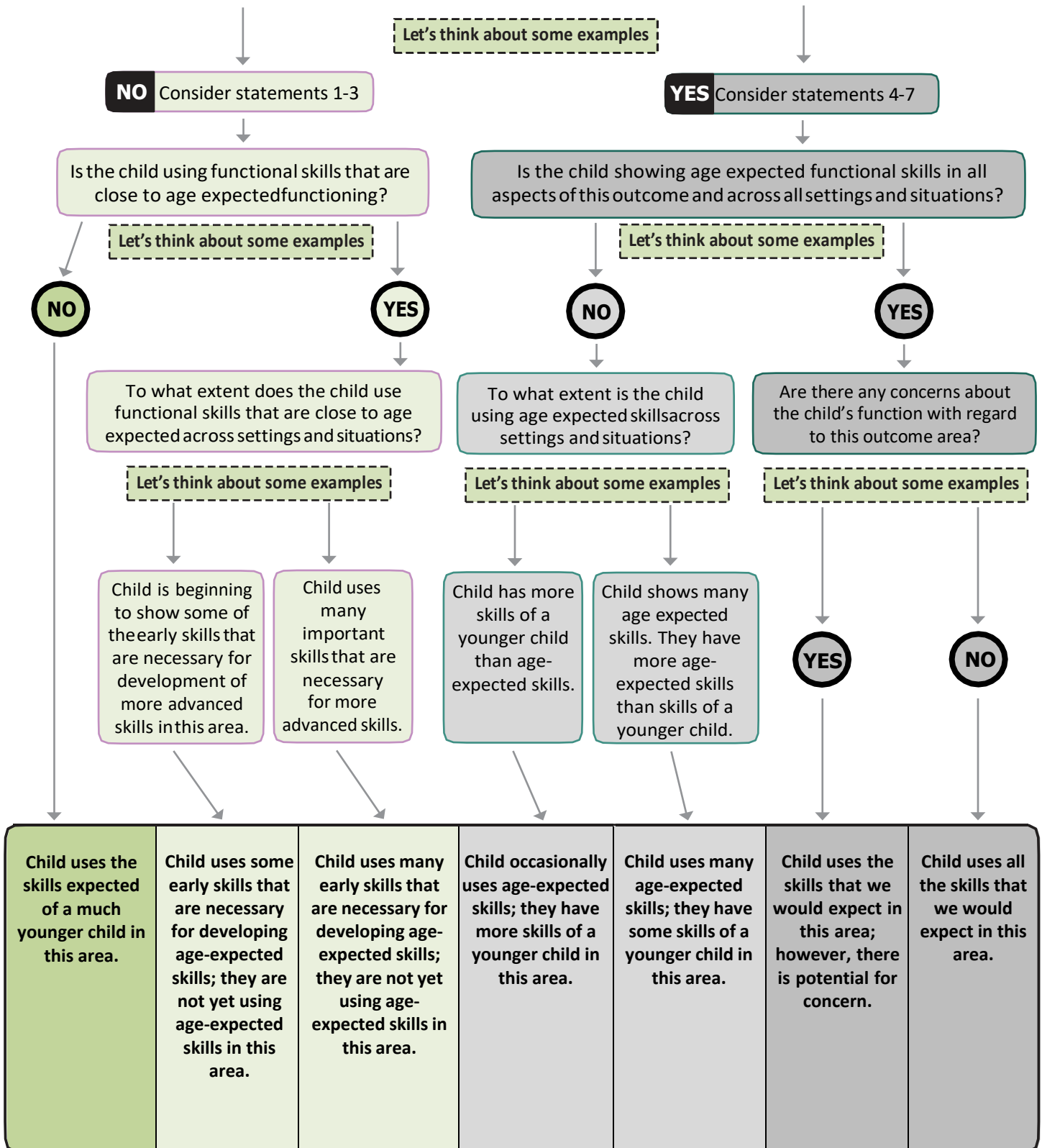


Decision Tree for Child Outcome Summary Statement Process

Based on All Assessment Information

Does the child ever function in ways that would be considered age expected regarding this outcome area?

NOTE: Performance of an age expected skill that emerges at a younger age is not enough by itself to answer "yes" to this question.



This professional development resource is adapted from the "Decision Tree for COS Process" developed by the Integrated Training Collaborative (ITC) and Infant and Toddler Connection of Virginia



Department of Children & Youth

Help Me Grow Early Intervention